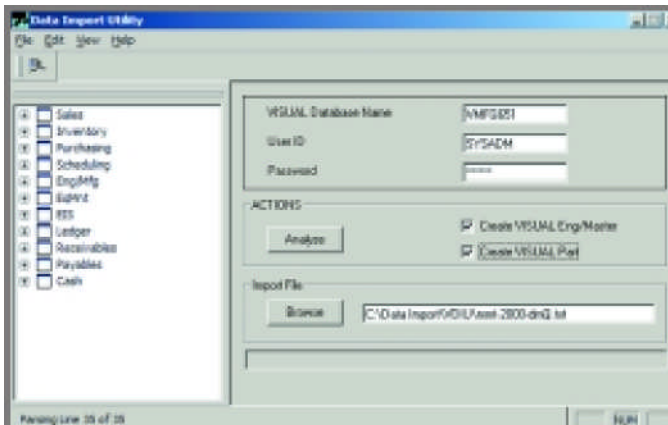


## Data Import Utility

The Data Import Utility (DIU) provides a Bill of Material and Part import interface to Infor VISUAL Enterprise for third-party applications. The third-party applications must generate a properly formatted flat file (that follows Application Program Interface guidelines) to pass to the DIU for import. Users can run DIU interactively or by command line from an external program. The DIU will validate all fields, recalculate required quantities, and produce a log of all transactions during the import process.



- Link third-party applications with Infor VISUAL Enterprise.
- Create Infor VISUAL engineering masters, work orders, and quotes from external data.
- Create new parts in Infor VISUAL from external data.
- Manage imported data with a program that validates fields, recalculates required quantities, and maintains a record of all transactions.

