

Infor VISUAL Quality Management

Infor VISUAL Quality Management is a fully integrated enterprise quality management system that addresses quality assurance issues in specific areas of your operations. You can establish, track, and manage every engineering activity and supply chain expectation while supporting business growth and profitability goals. You can create critical manufacturing specifications for products, processes, equipment, and measuring devices, and improve enterprise team collaboration with vendors, customers, and employees. Infor VISUAL Quality Management provides tools to help you automate associated design, pre-production, production, and post-production activities; expertly manage business performance; and easily collect, control, and analyze quality system data.

Infor VISUAL Quality Engineering and Product Management

Advanced Product Quality Planning (APQP) and Production Part Approval Process (PPAP)

- Manage engineering processes from concept and design through all phases of product development.

The screenshot shows the 'VISUAL Quality (R) - APQP Maintenance' window. It includes fields for APQP Project ID (APQP1), Program (APQP-TABLE), Part (MMC-FM0001), and Customer ID (ABLMAN). A 'Calculate Summary' button is present, along with summary statistics: Total number of assignments: 27 (1-n tasks: 3) and Total number of assignments: 19 (1-n tasks: 32). Below this is a table with columns: Step, Status Indicator, Assigned To, Due Date, and Closed Date.

Step	Status Indicator	Assigned To	Due Date	Closed Date
2.0 Product Design and Development				
2.1 Design FMEA		Internal: JAI - JAMES A. IRWIT	06/12/2001	
2.2 Design for Manufacturability and A		Internal: JAI - JAMES A. IRWIT	07/12/2001	
2.3 Design Verification		Internal: JAI - JAMES A. IRWIT	07/20/2001	
2.4 Design Reviews		Internal: JAI - JAMES A. IRWIT	08/01/2001	
2.5 Prototype Build - Control Plan		Internal: JAI - JAMES A. IRWIT	08/15/2001	
2.6 Engineering Drawings		Supplier: DERHAR - DERRY	08/15/2001	
2.7 Engineering Specifications				
2.8 Material Specifications		Supplier: DERHAR - DERRY	08/22/2001	

Engineering Project Management

- Initiate and drive short- and long-term engineering activities such as new product development, new OEM projects, and other critical activities.

Product Data Management (PDM)

- Unite part master information, Bill of Material detail, design characteristics, and key production specifications into one database environment to achieve complete control over products.

Document Management

- Centralize the location, change history, and document audits for electronic and physical documents.

Inspection Plans, FMEAs, and Control Plans

- Maintain critical product and process specifications with associated equipment, device, inspection, and control charting as defined in Product Data Management and Process Management.
- Create inspection plans linked to statistical process control (SPC) for engineering review and evaluation.

Infor VISUAL Quality Management continued...

Equipment and Tooling Management

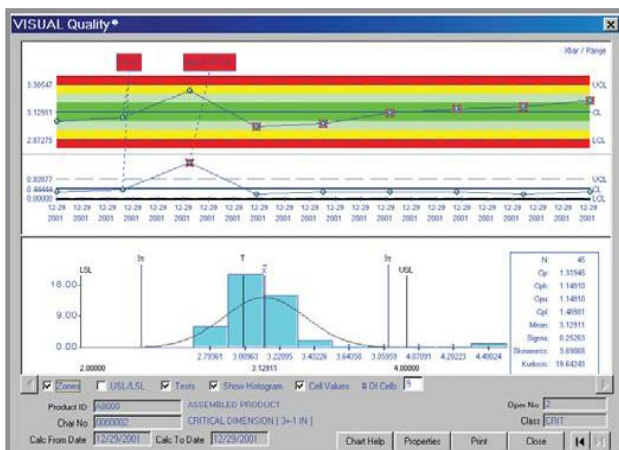
- Use tools for preventive and reactive maintenance, including equipment and tooling lists, integrated ERP and Preventive Maintenance scheduling, work order generation, spare part and equipment usage, Preventive Maintenance records, and more.

Calibration and Device Studies

- Document, schedule, and track devices and test equipment for calibration.

Integrated Process Management (IPM)

- Identify problems that can positively or negatively impact operations before the product reaches shipping or material review board personnel.



Process Capability & Statistical Process Control (SPC)

- Prepare control charts and perform management direction, planning, gage capability, process control and capability analysis, sampling plan preparation, and process detail documentation.

Infor VISUAL Quality Supply Chain Management

Customer, Supplier, and Employee Communication

- Involve suppliers, customers, and employees through documented and addressed feedback, advanced quality planning, and individual or team training.

Skills, Training, Qualifications, Productivity, and Performance Tracking

- Develop, track, inventory, schedule, and perform time-consuming tasks involved in managing human resources.

Skip-lot and Vendor Performance Management

- Manage either manual or automated ERP/Regular incoming and ERP/Skip-lot inspections for customer-specified and internal receiving requirements.

Infor VISUAL Quality Management continued...

Automated Preventive Maintenance (PM) Scheduling

- Schedule and track all preventive and reactive maintenance.

Nonconformances (NCM) and Quality Traceability

- Detect, assign, and track continuous improvement activities using complete problem-solving details.

Corrective Actions and 8 Discipline (8D) Reports

- Manage assignments and performance with the system-wide task manager.

Cost of Quality and Audit Management

- Assess and control overall business performance and establish best direction for bottom line improvement.

The screenshot displays the 'FMEAs Maintenance' window in Infor VISUAL Quality Management. The interface includes a menu bar (File, Edit, Options, Help) and a toolbar with icons for FMEA ID, Product ID, Product Type, Revision Level, FMEA Name, System, Sub System, Design Responsibility, Key Date, Prepared By, Core Team, Supplier/Plants Affected, Review Comments, FMEA Items, Change History, Link/Embed, and Quality Costs. The main data area shows the following information:

FMEA ID**	0000003	Status	Current	Entity ID	MMC
Product ID	A8000	ASSEMBLED PRODUCT			
Product Type	GENERIC	GENERIC			
Revision Level	A	Issue Date	01/06/2001		
FMEA Name	A8000				
System	FRAME	FRAME ASSEMBLY - MAJOR			
Sub System	DOOR	DOOR			
Design Responsibility	ENG	ENGINEERING			
Key Date	01/20/2001	Model Year/Product(s)	All		
Prepared By	JAI	JAI R. SHANKER			
Core Team	Clear Sky - Mr. Vazquez MMC - Jai Shanker MMC - Mr. Murali				

At the bottom, there are buttons for Save, Clear, Refresh, Delete, Copy, and Close.

Infor VISUAL Quality Management Workflow Tools

System-wide Task Management and Enterprise Team Collaboration

- Use the single point-of-reference window, My To Do List, to analyze all activities within the system, access employee work overload conditions, re-assess priorities, and assign additional human resources.

Projects Management

- Record, schedule, and track resource usage and project assignment completion.

Multi-Vendor Workflow

- Manage your end-to-end e-business strategy from product conceptualization to multi-site worldwide distribution with the manufacturing business process as the central point.

E-mail Integration

- Employ e-mail messaging in conjunction with direct database-driven notification and activity tracking for individuals inside and outside the company.